



# Solar Carportsystems

## Solar Leading Technologies



# Arausol Innovative Solar Systems

- Arausol is specialized in development, production and assembly of PV Systems.
- Our core competences are big projects domestic and abroad, mainly in ground mounted systems.
- Our array of products also encloses roof top solutions as well as tracking and carport systems.



# Solar Carportsystems

---

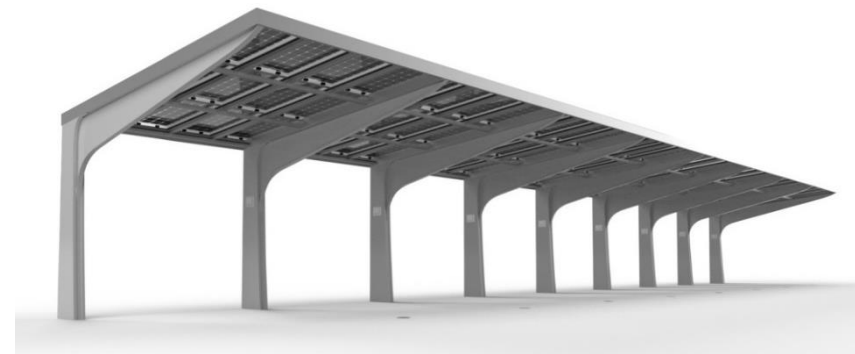
Arausol Solar Carport Systems are self-financed and provide an ideal supplement in order to make use of parking areas. Due to self-supporting construction, Arausol Solar Carports provide optimum accessibility and allow convenient parking.

- Convenient parking and unrestricted door opening
- Short assembly time and simple construction
- Modular construction system
- Maximum utilization of parking areas
- Site-specific structural analysis
- Durable and high quality materials
- Suitable for almost all module types
- Modern and elegant design
- Financing by solar electricity
- Individual customer designs
- Drainage system
- Inverter fastening
- Cable guides
- Circumferential roof trim
- Lighting
- Additional advertising space
- Customer-specific assembly alternatives
- Powder coating individual RAL color

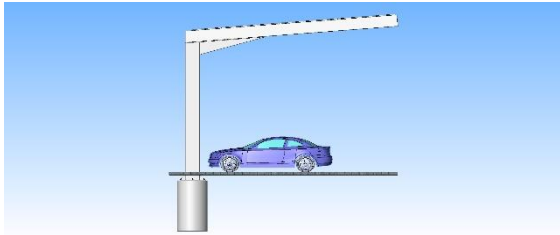
# Solar Carport

## Your benefits

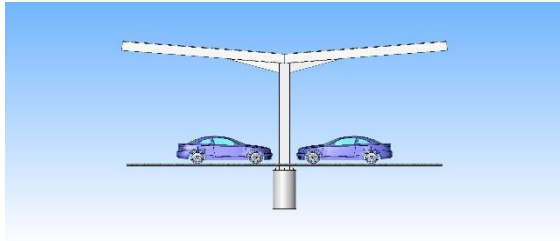
- Comfortable parking and free door opening
- Short assembly times and simple assembly
- Modular Systems
- Maximum use of the parking area
- Site-specific statics
- Durable and high quality materials
- Suitable for almost all types of modules
- Modern and elegant design
- Individual customer designs
- Financing by solar electricity



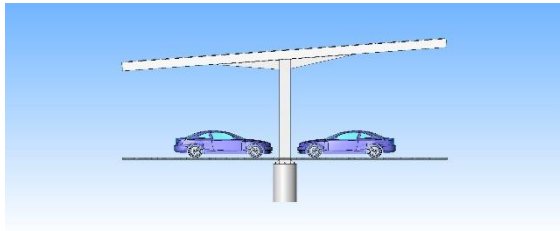
# Solar Carport



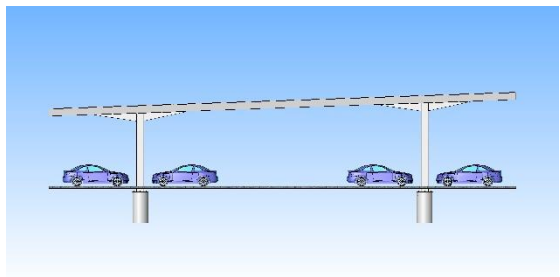
- SCS 100 - Single-row carport layout, standard and long version, Pitch roof design



- SCS 200 - Double-row carport layout, east - west orientation, Y - design frame construction

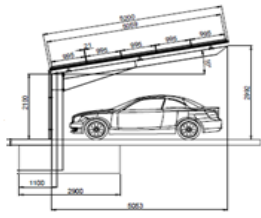

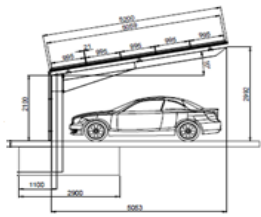

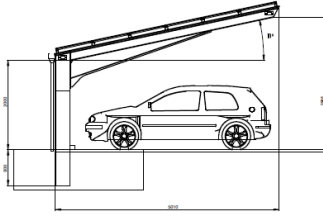
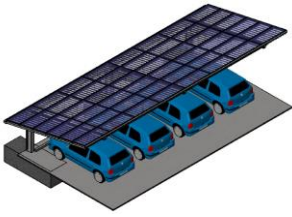
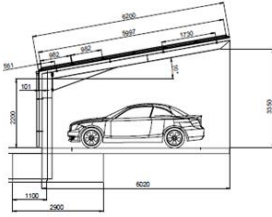
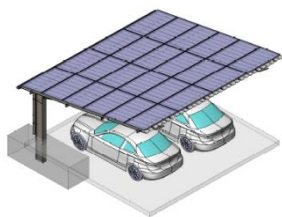


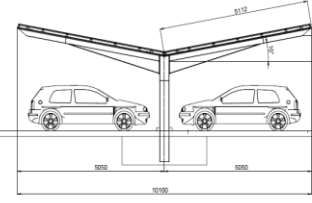
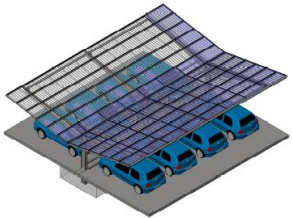
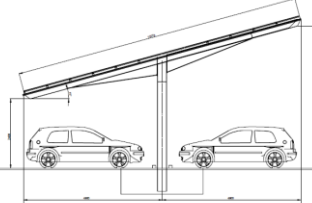

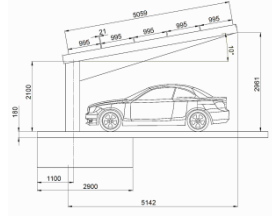
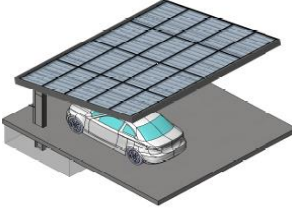
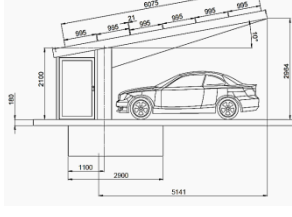
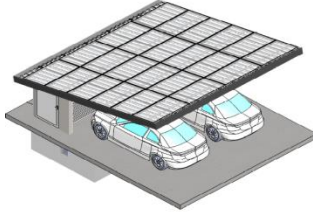
- SCS 300 - Double-row carport layout, south orientation, Pitch roof design



- SCS 400 - Long span system

# Types

Type	Drawing	Graphic
SCS 100 S1 Standard l = 5000 mm		
SCS 100 S2 Standard l = 5000 mm		
SCS 100 S4 Standard l = 5000 mm		
SCS 100 L2 l = 6000 mm		

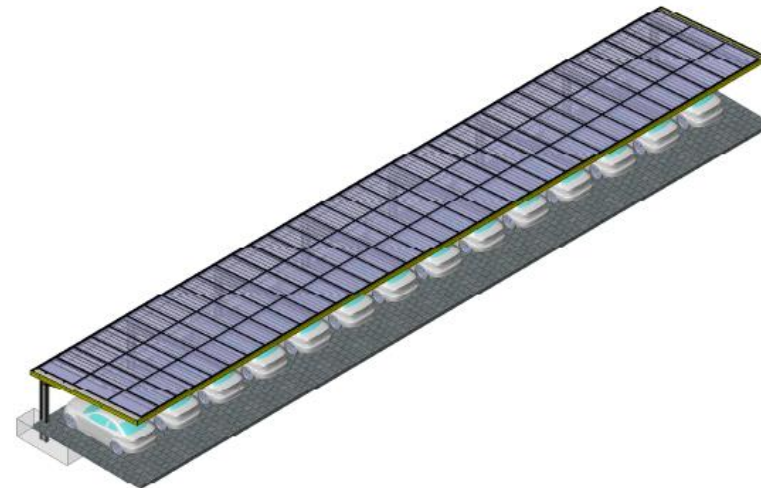
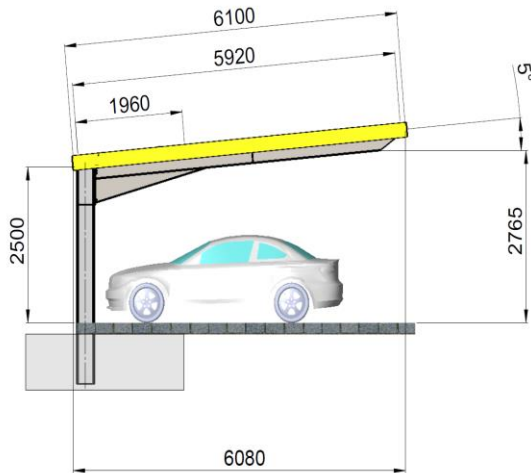
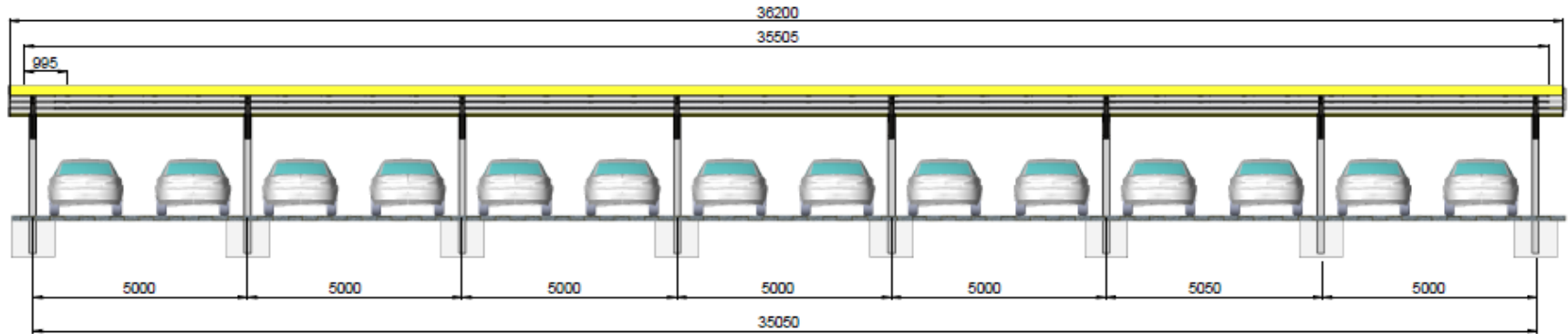
Type	Drawing	Graphic
SCS 200 S8 east-west-orientation		
SCS 300 S8 South orientation		
SCP 100 S2 Premium Design		
SCA 100 S2 Premium		

# Solar Carport Premium SCP 100



# Solar Carport SCS 100 - 14

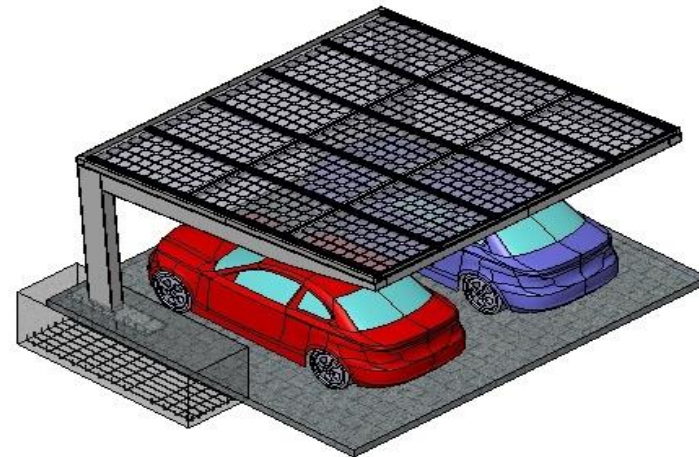
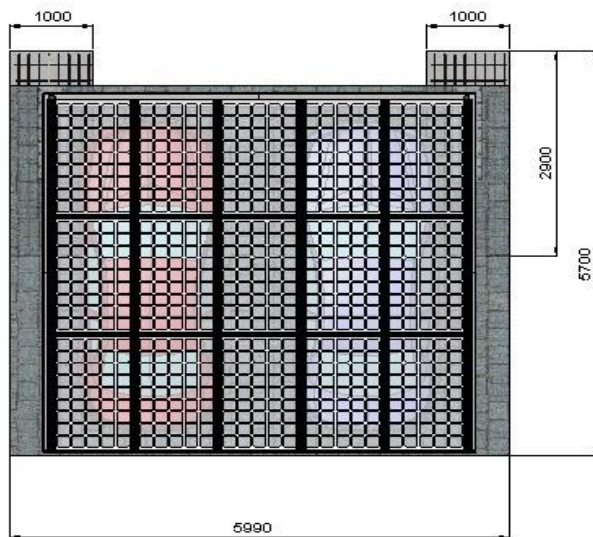
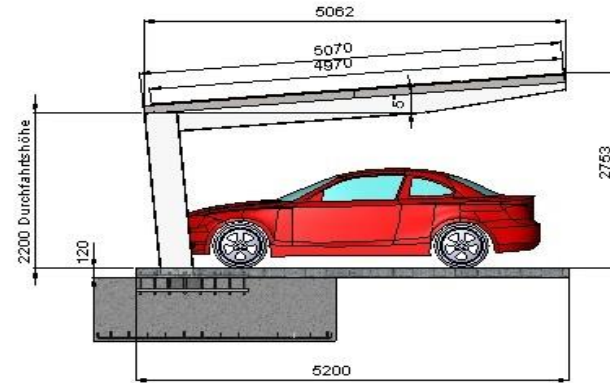
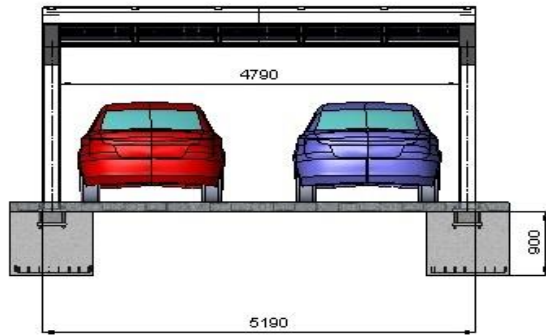
1 row design - 14 parking places





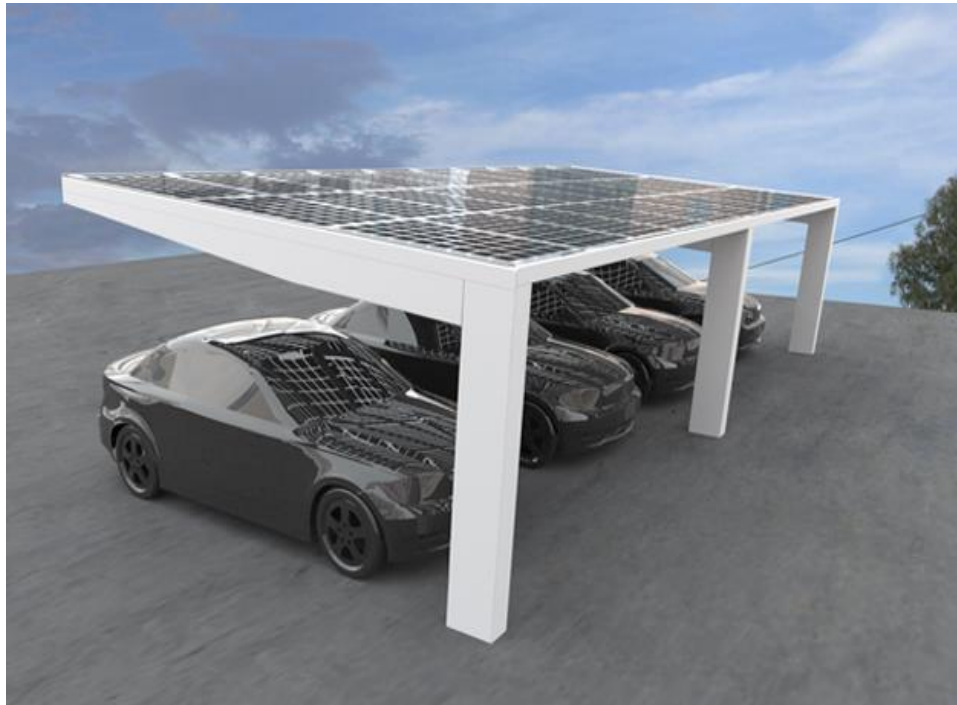
# Solar Carport SCS 100 - 2

## 1 row design – 2 parking places

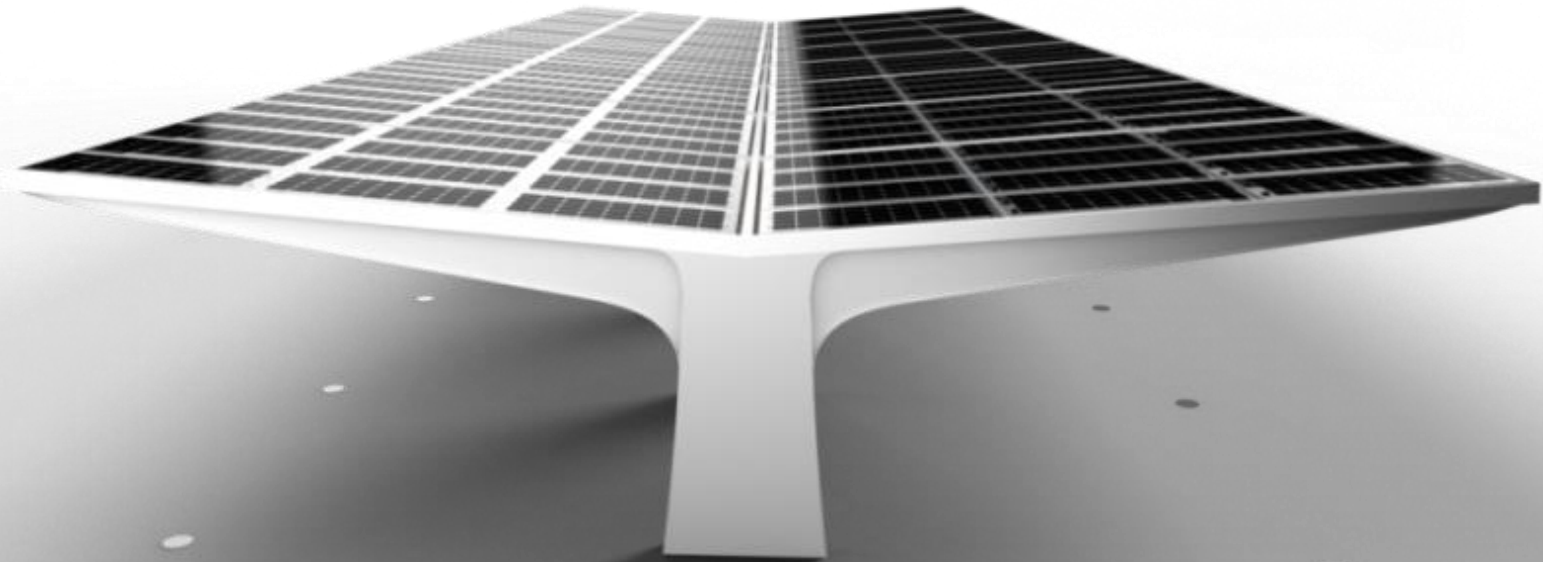


# Solar Carport SCS 100-4

1 row design - 4 parking places

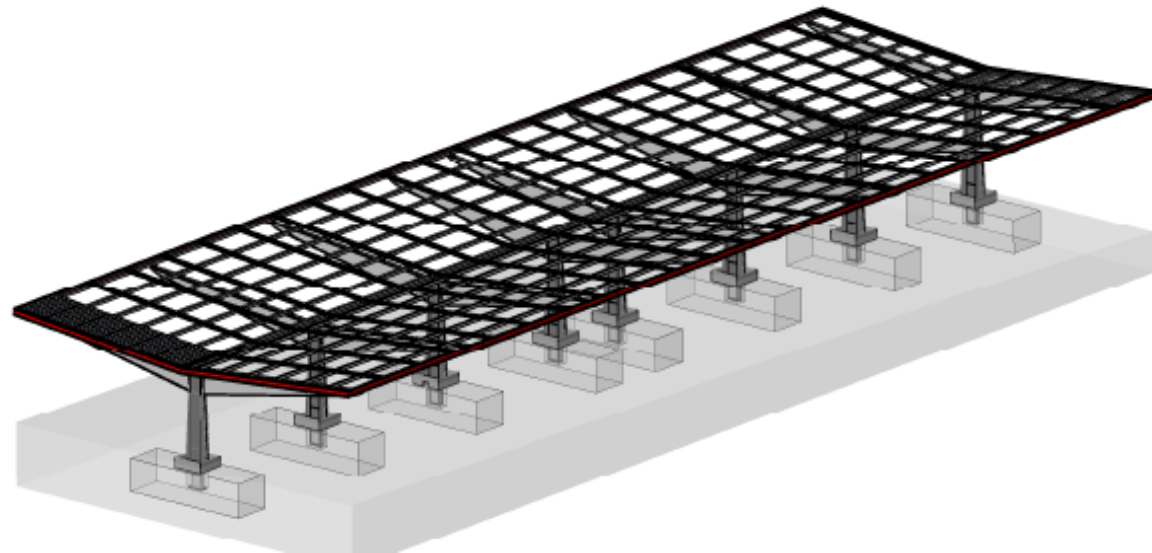
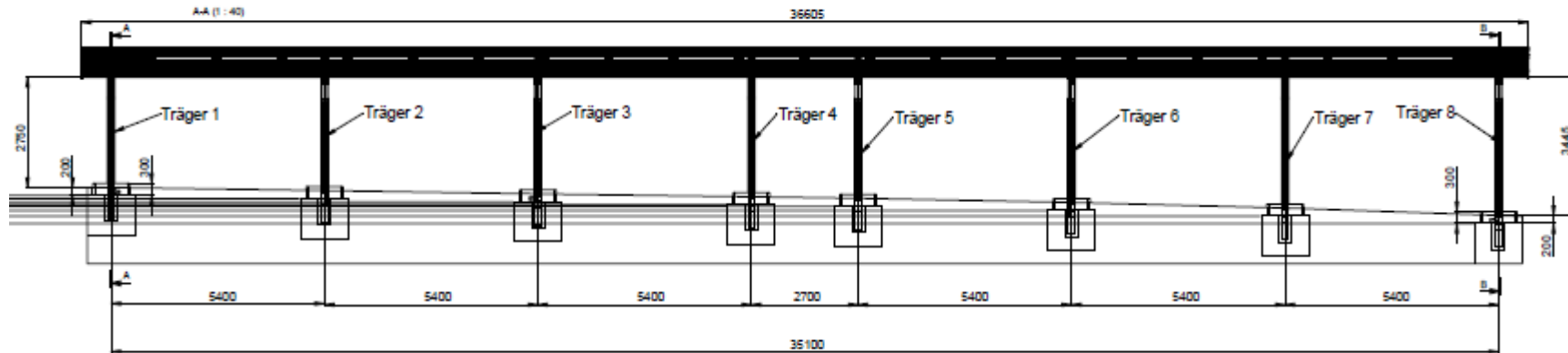


# Solar Carport Premium SCP 200, Y - Design



# Solar Carport Premium SCP 200

With Glas - Glas Modules, 26 Parking places



# Reference: Solar Carport SCS 200

longversion, 26 parking places

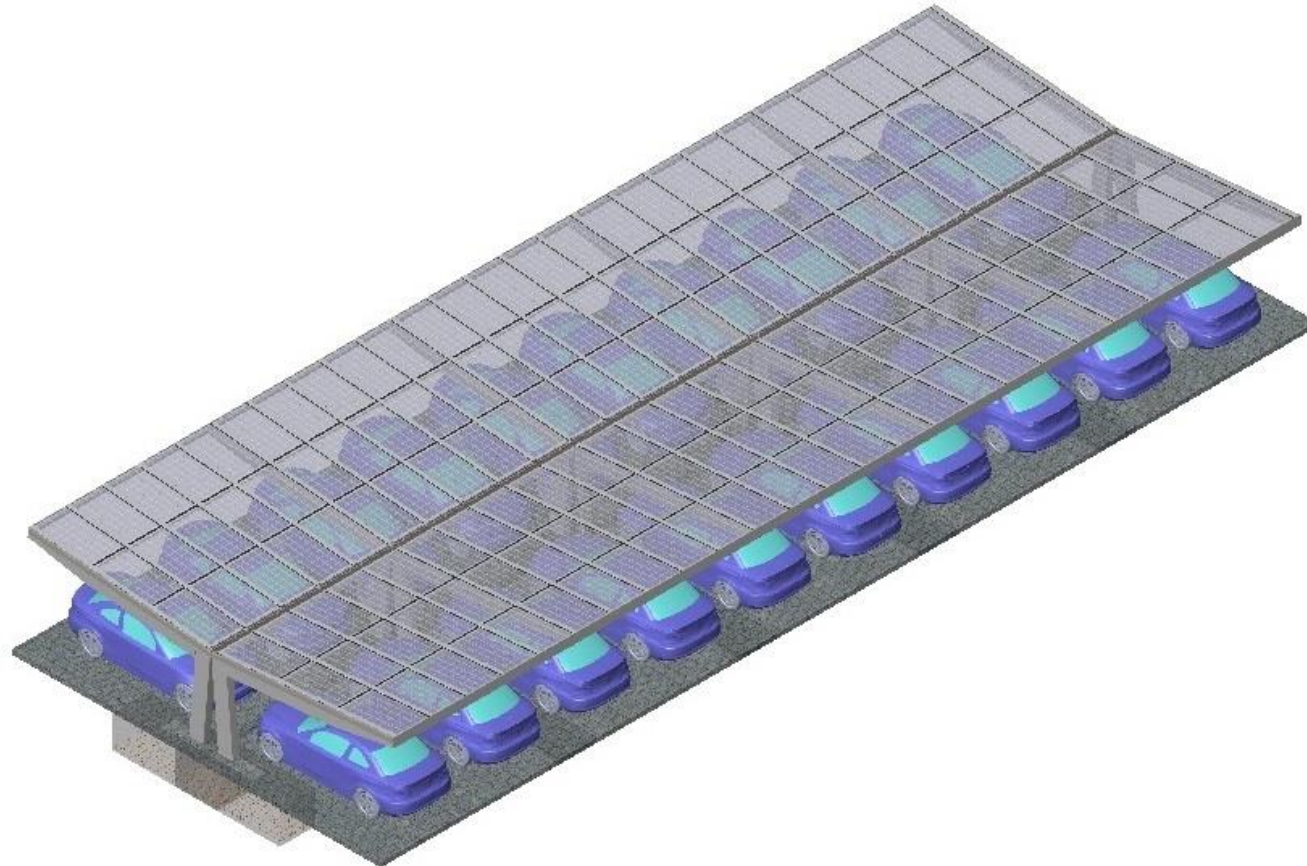


# Solar Carport with glass - glass - modules



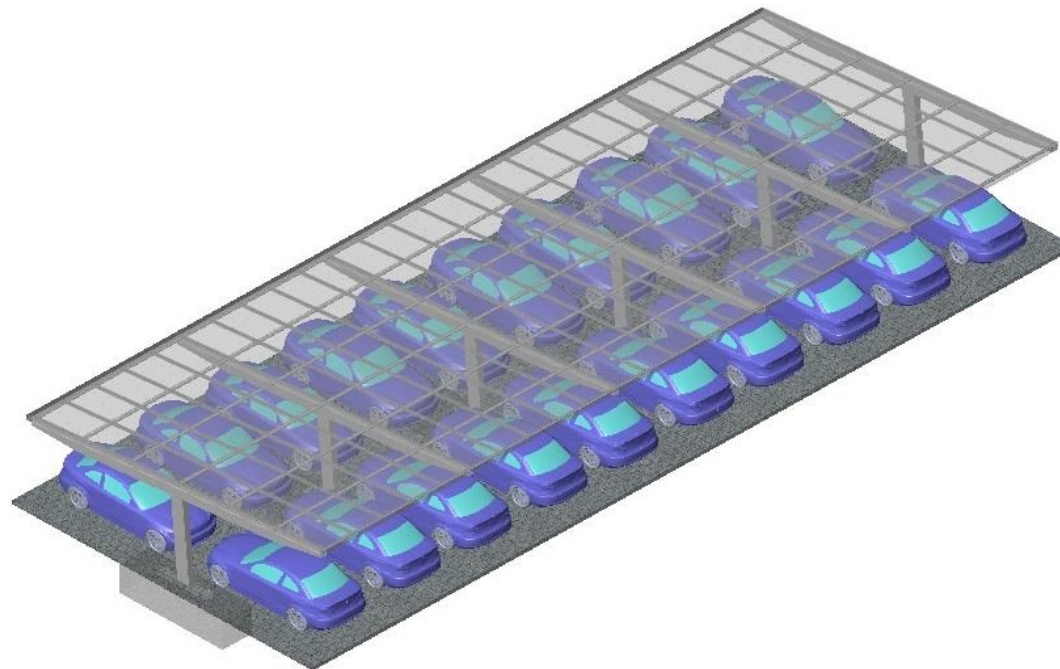
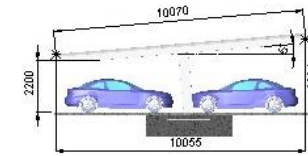
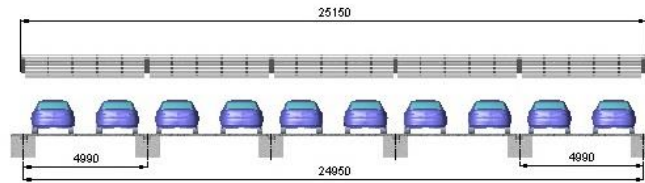
# Solar Carports SCS 200

One row design - 20 parking places



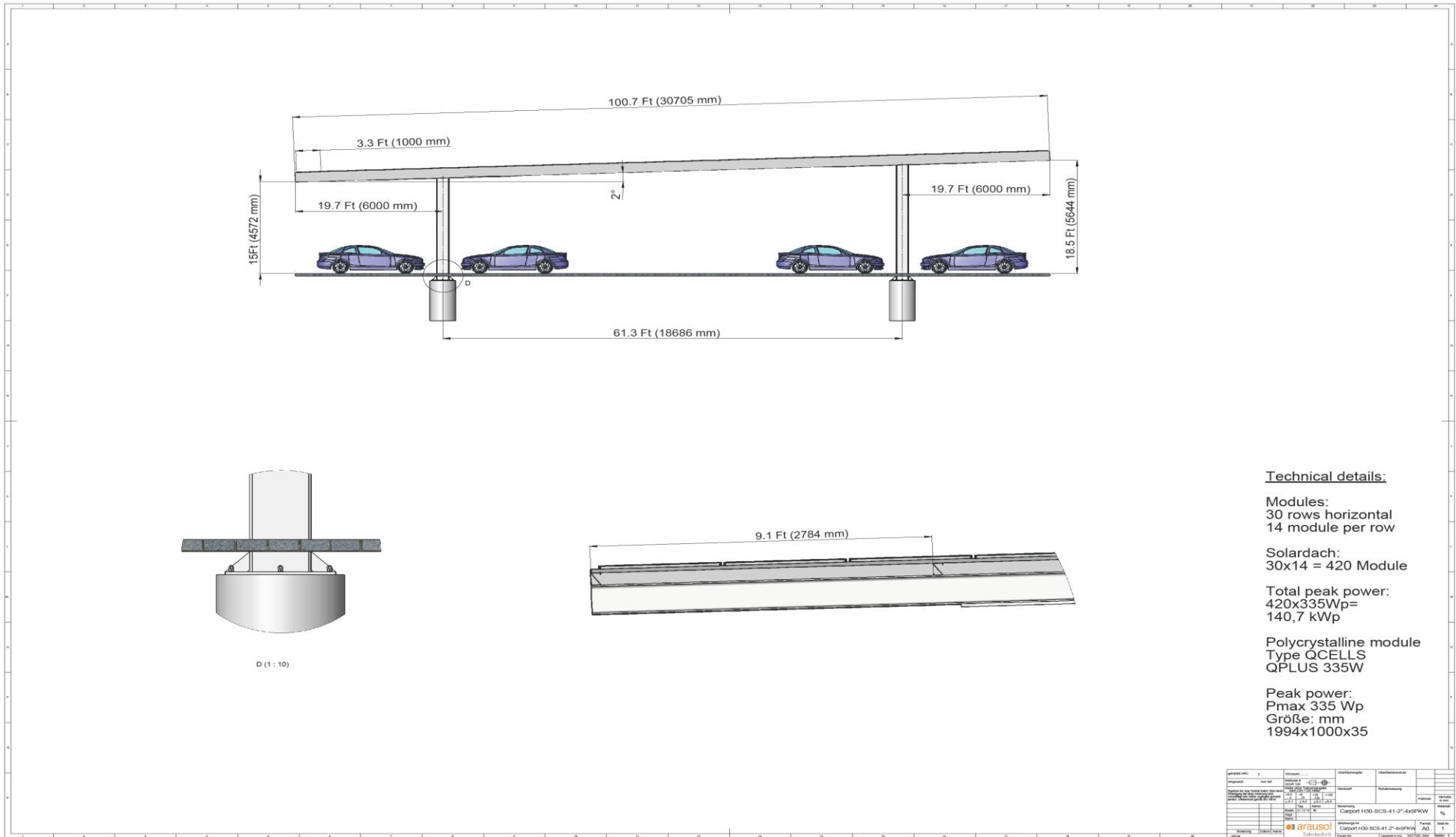
# Solar Carport SCS 300

One row design - 20 parking places

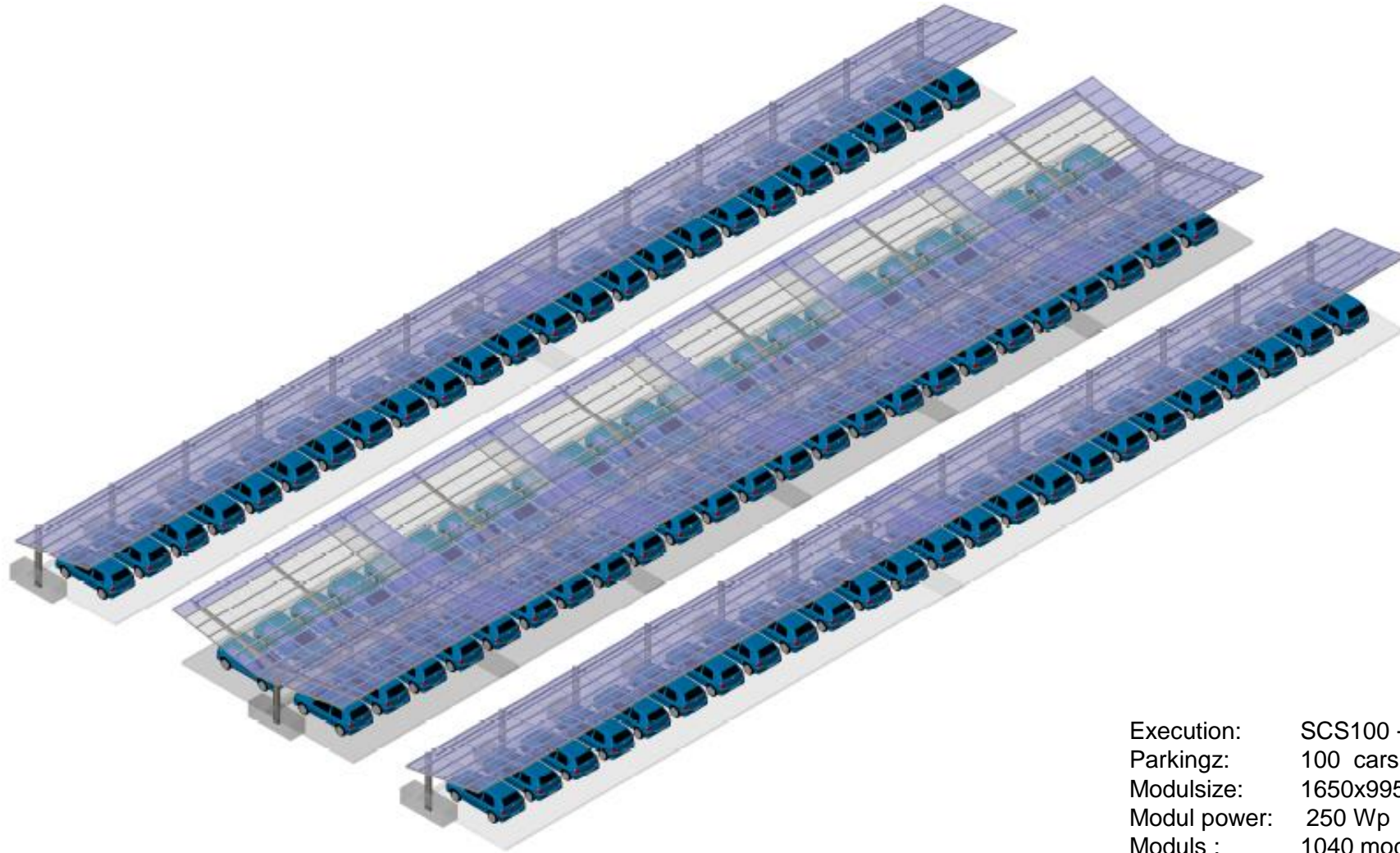




# Solar Carport TYPE - SCS 400 Long Span - System



# Big solar Car-Parks



Execution: SCS100 + 200  
Parkingz: 100 cars  
Modulsize: 1650x995x45 mm  
Modul power: 250 Wp  
Moduls : 1040 moduls  
**PV-power: 260,00 kWp**

# Scope of Performance

- Consulting
- Projecting
- Constructing
- Fabrication
- Assembly
- Start-Up Procedure
- EPC
- O & M



Ground Mounted



Tracker



Rooftop



Carportanlagen

# Contact



Arau Technik GmbH  
Hanfwiesenstr. 15  
D - 73614 Schorndorf  
Tel: +49 7181 9220-0  
Fax: +49 7181 9220-200  
Mail: [info@arausol.de](mailto:info@arausol.de)  
Web: [www.arausol.de](http://www.arausol.de)

