



Arausol

Solar Leading Technologies



Arausol Innovative Solar Systems

- Arausol is specialized in development, production and assembly of PV Systems.
- Our core competences are big projects domestic and abroad, mainly in ground mounted systems.
- Our array of products also encloses roof top solutions as well as tracking and carport systems



Scope of Performance

- Consulting
- Projecting
- Constructing
- Fabrication
- Assembly
- Start-Up Procedure
- EPC
- O & M



Ground Mounted



Tracker

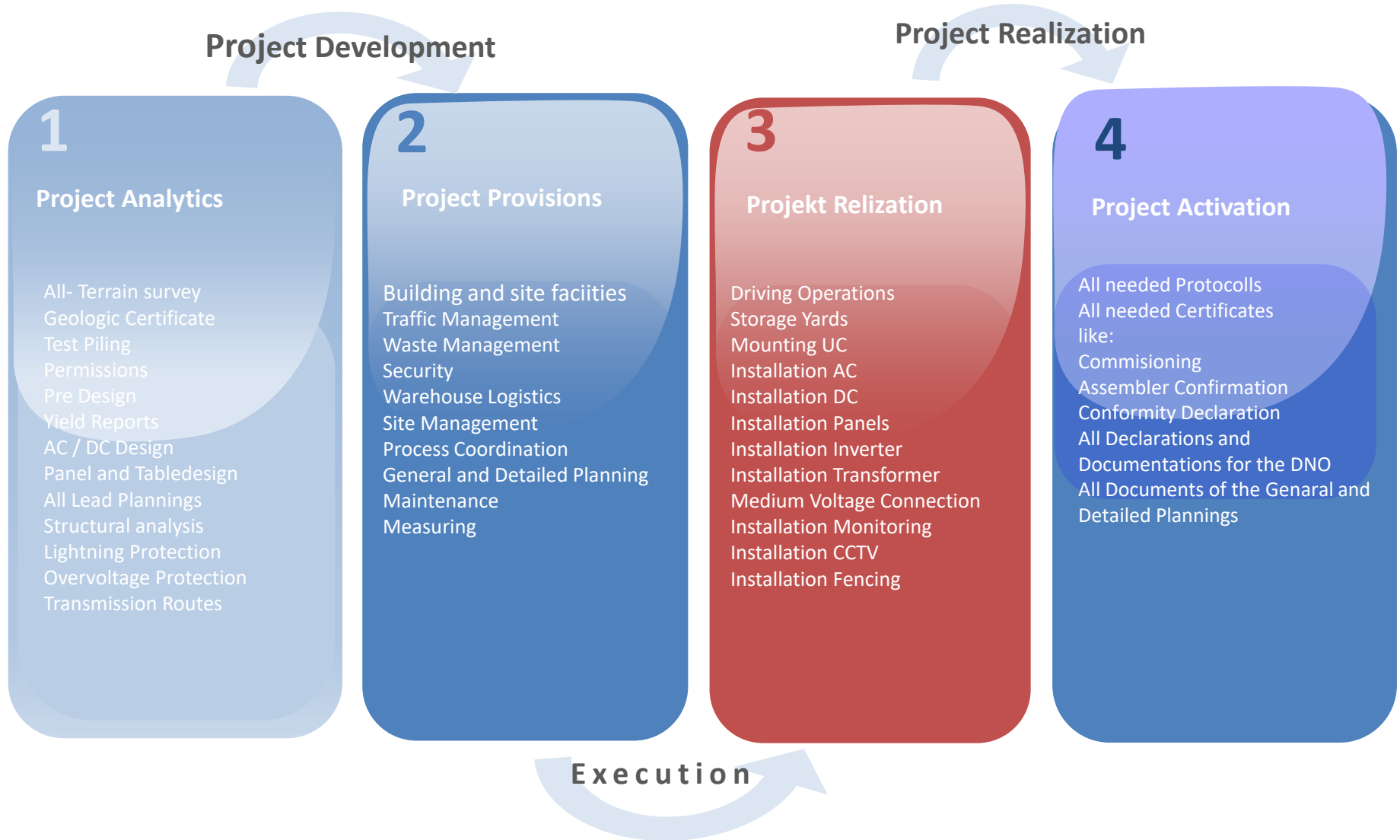


Rooftop



Carportanlagen

Project Development



Mounting System FMS



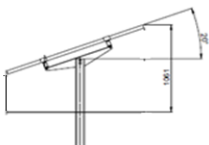

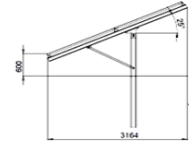
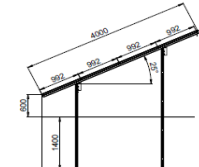
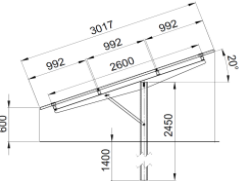
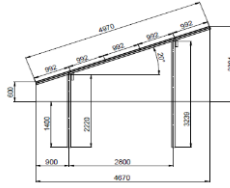
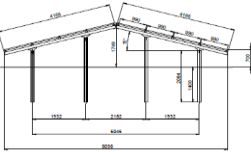
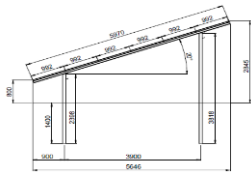
Mounting System FMS

Advantages

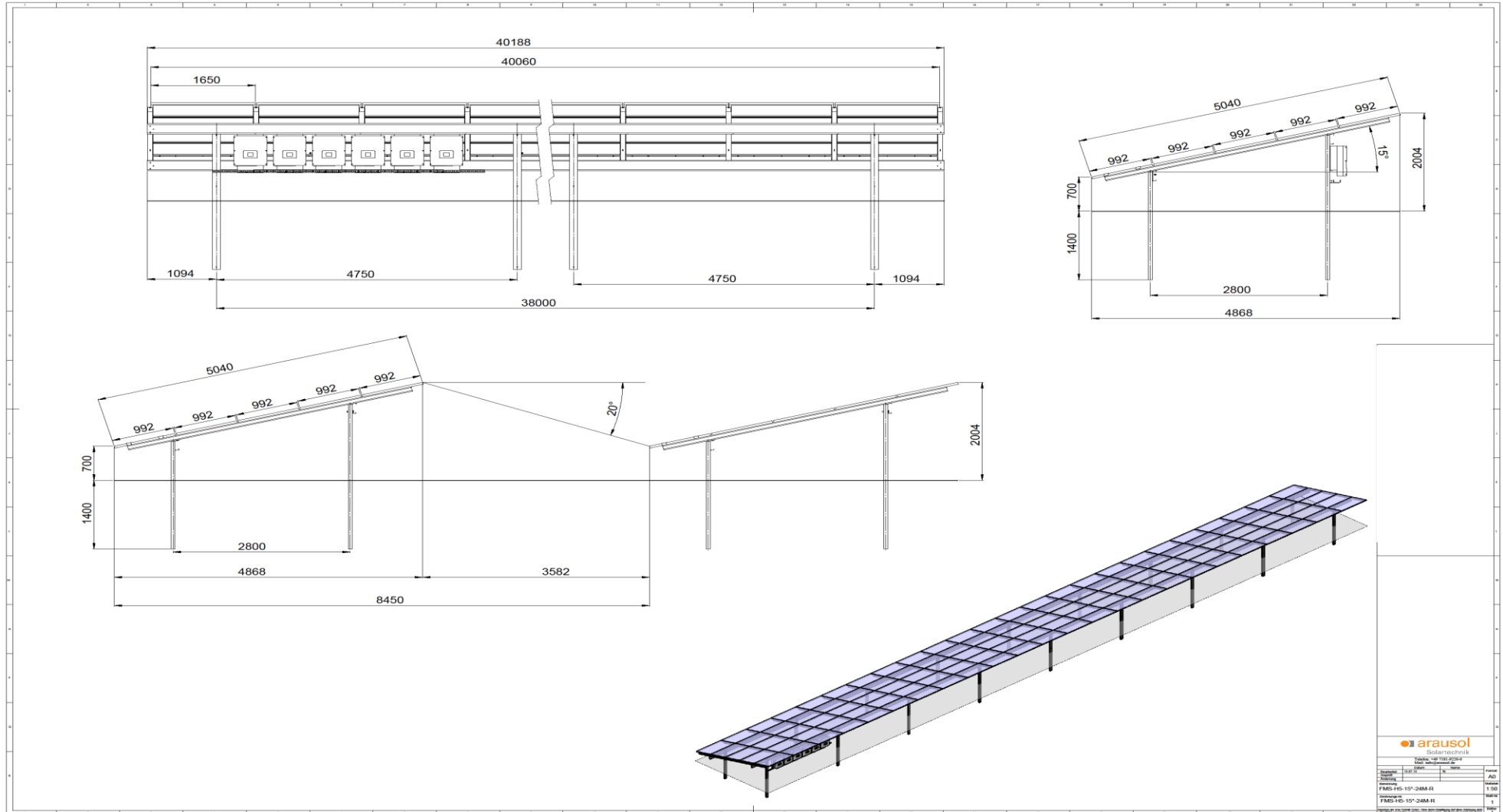
- Extremely short mounting time thanks to modules which are predominantly prefabricated and preassembled in the factory
- Very robust and extremely stable design
- Mounting of the complete frame support with just one screw
- Very quick and easy installation thanks to a modular insertion system
- Only one central support, thus ensuring easy access for site maintenance
- Made-to-measure ground-mounted system registered with the German Patent Office
- Individual static load calculation for every project
- Long service life thanks to the use of durable materials
- Precisely coordinated system components with short delivery times
- Optimum site logistics with just-in-time delivery



Mounting System FMS

Type	Module orientation	Drawing	Type	Module Orientation	Drwaing
FMS-V1	1 Module vertical		FMS-H3	3 Modules horizontal 2-Pile-System	
FMS-V2	2 Modules vertical		FMS-H4	4 Modules horizontal 2-Pile-System	
FMS-H3	3 Modules horizontal		FMS-H5	5 Modules horizontal 2-Pile-System	
FMS-H4-OW	4 Modules horizontal East-West declination 2-Pile-System		FMS-H6	6 Modules horizontal 2-Pile-System	

Detail Description



Mounting System FMS



Table Design FMS-V2



Table Design FMS-H3



Table Design FMS-H4



Table Design FMS-H6

Mounting System FMS



FMS- H6

Mounting System FMS



FMS- H4

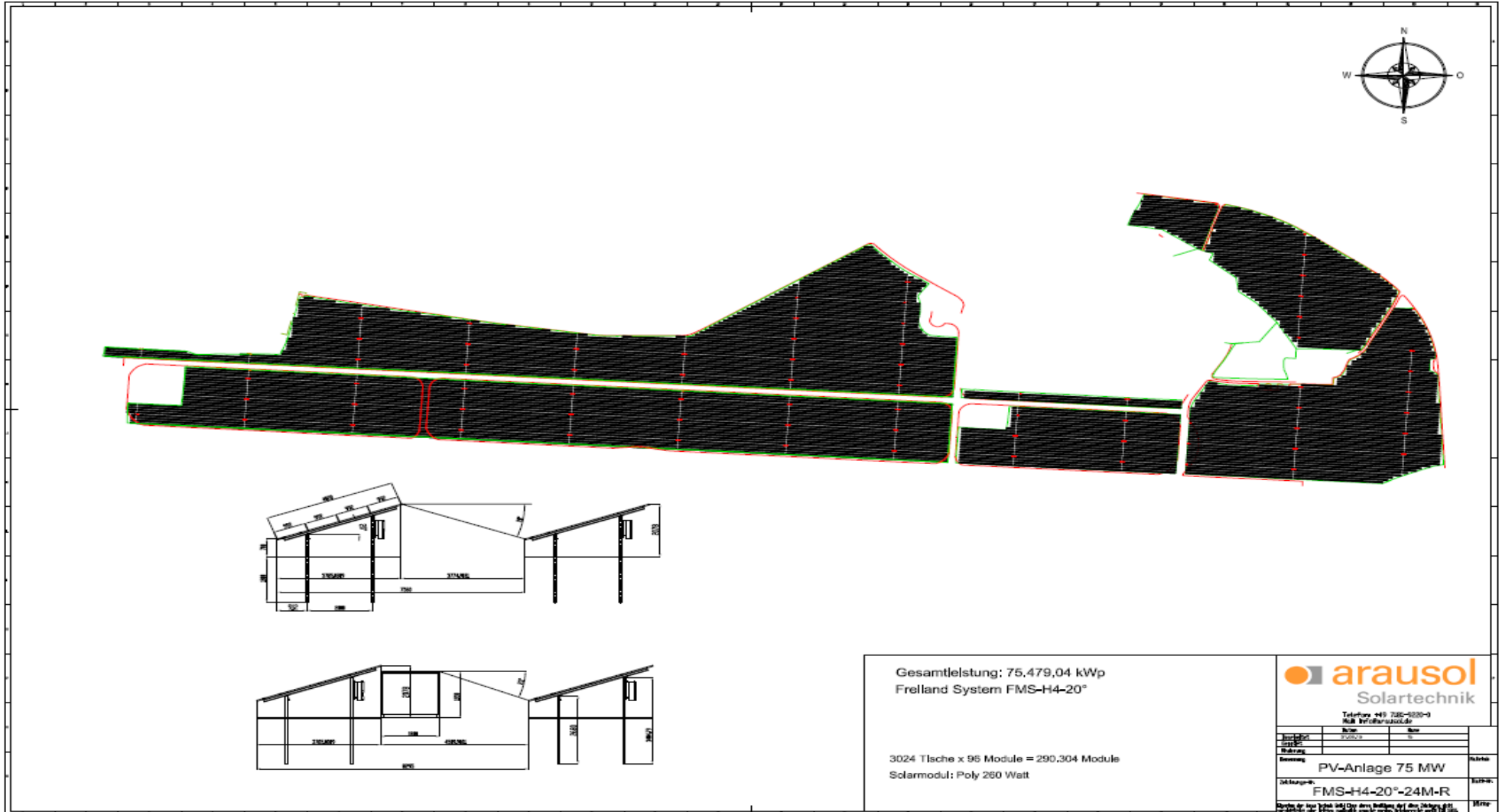


FMS- H5

Reference: Vandel 75 MWp / Mounting System



Reference: Vandel 75 MWp / Mounting System



© Arausol 2013 - Die Inhalte und Ausführungen sind urheberrechtlich geschützt. Jede Weitergabe, Verbreitung oder Vervielfältigung an Dritte ist ohne schriftliche Genehmigung untersagt.

Reference: Birkenhain 3,6 MW / Mounting System



Reference: Nakskov 4,2 MWp / Mounting System



Reference: UK Scunthorpe 40 MWp / Mounting System



Reference: Osterwieck, Germany 2,0 MWp/ Mounting System



Reference: Salmour, Italy 6,0 MWp/ Mounting System



Ground Mounted Systems



Horizontal Trackingsystem HTS-H3



Horizontal Trackingsystem HTS-H3

HTS Tracking System advantages

- Highly robust design with proven site-specific static
- Stable one-driven-pile-construction for ramming or concreting
- Large-dimensioned, maintenance-free and for a long service life designed swivel bearing systems
- Bearing adjustment in X-, Y- and Z-direction and also in horizontal rotation and vertical rotation tilting axes adjustable bearing mounting for quick and easy compensate for uneven floors
- Very simple and extremely fast on-site installation
- Exact astronomical control, completely designed with proven Siemens components
- Automatic protection via tilt sensors, limit switches, wind sensors and proportional storm position
- Long rows of tables and large blocks with a very robust and proven drive system
- Optimum profitability due to above-average earning and low system and assembly costs
- Delivery with fully programmed control incl. backtracking
- All materials and coatings are designed for long life
- Short delivery times and reliable just- in -time delivery
- Highly robust design with proven site-specific static

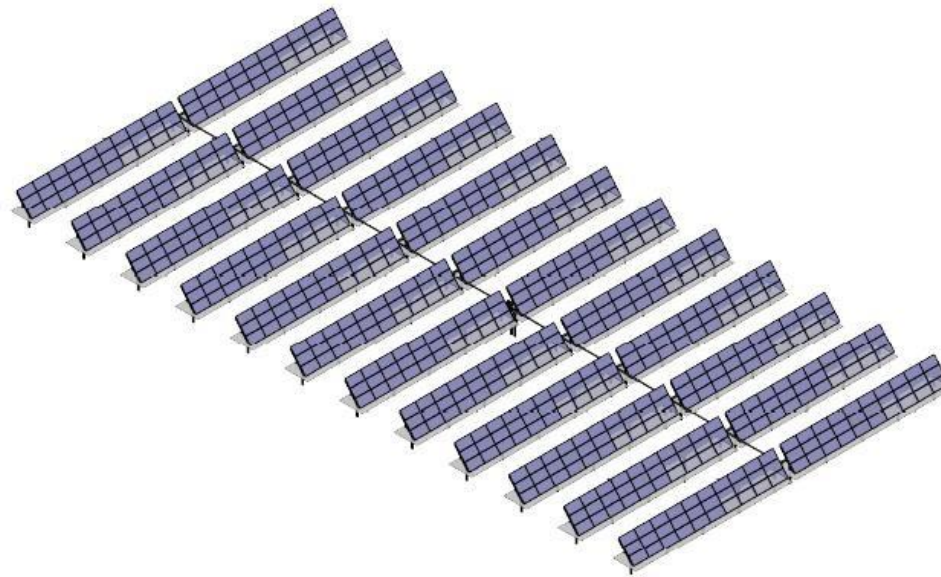
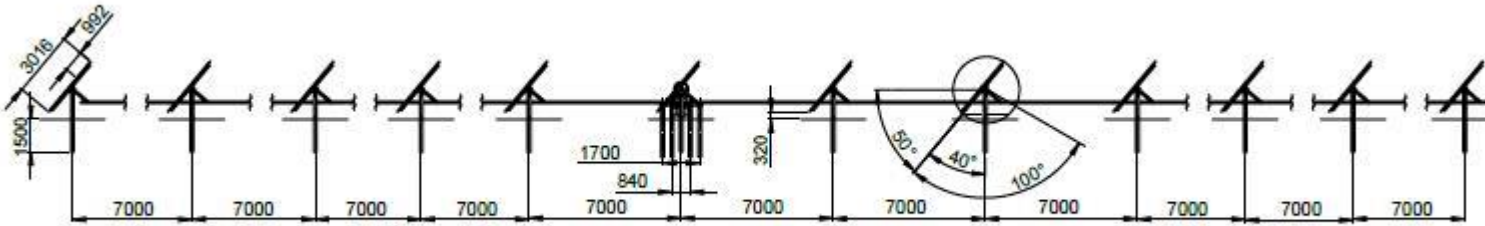


Tracker Positions



Example Bloc

1 2 tables à 60 modules = 720 modules Bloc power = 720 x 320 Wp = 230,40 kWp



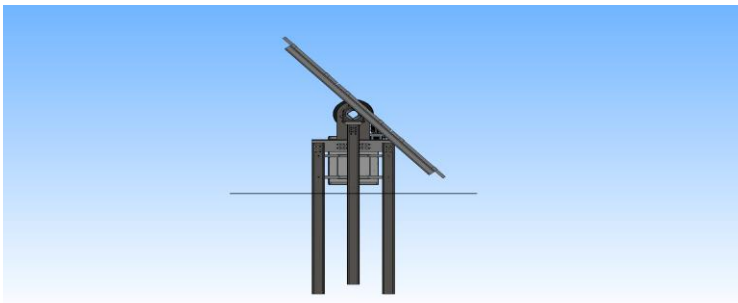
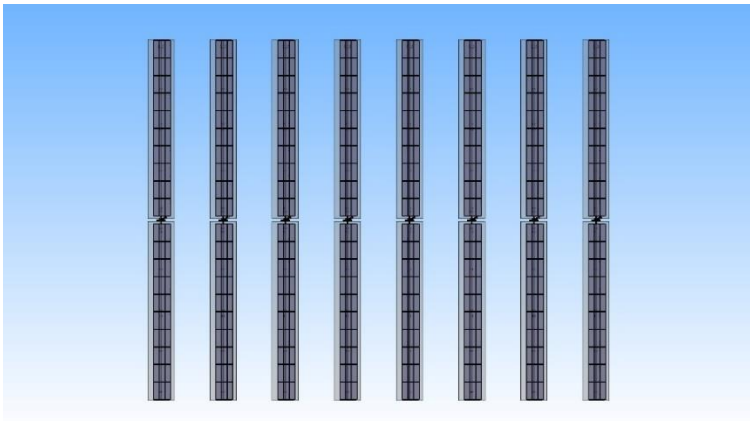
Example arrangement

PV-Block with single row drive

Tablepower 11,00 kWp

Table drive for a table row with

2 x 22 = 44 moduls per tablerow (72,6m²)

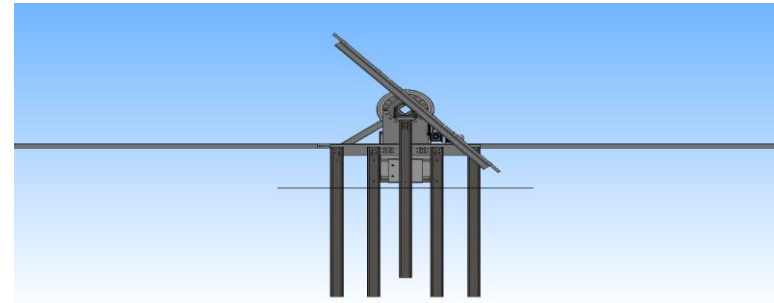
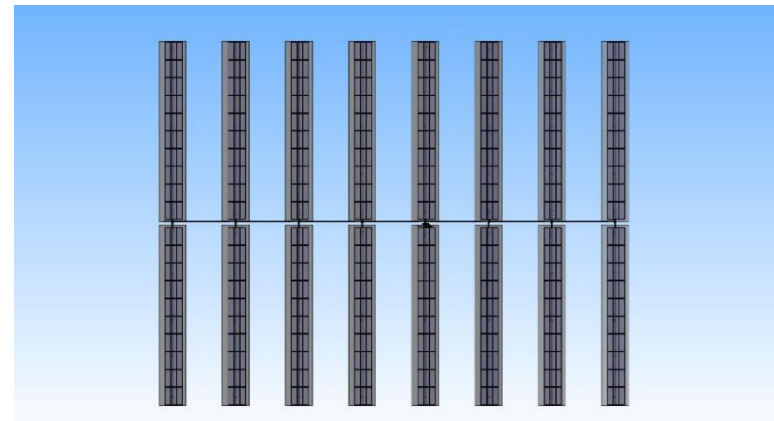


PV-Block with blockdrive

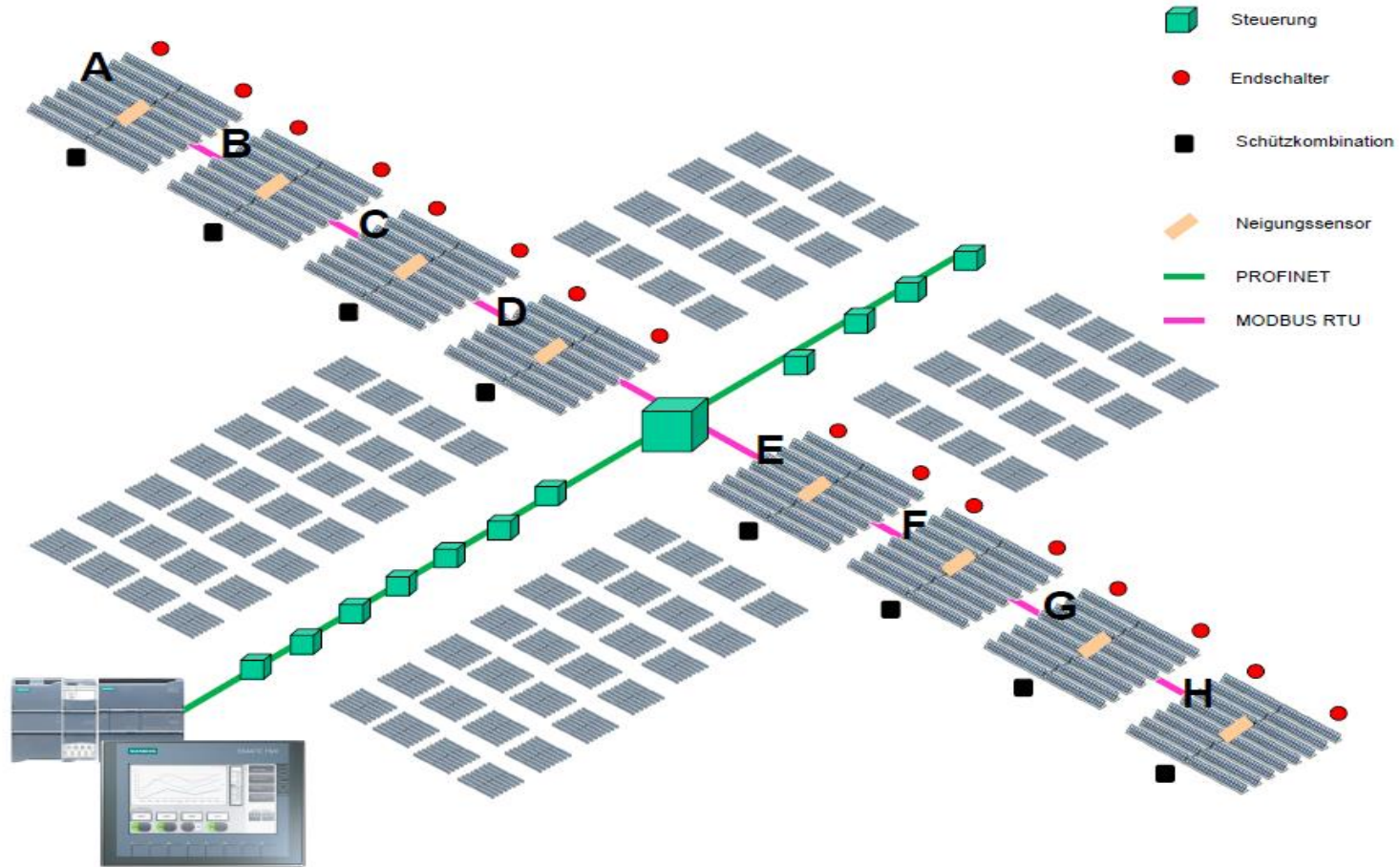
Blockpower 132 kWp

Block drive for 12 table rows à

44 modules per row = 528 modules (871,2 m²)



Control Tracking System HTS



Construction



Construction



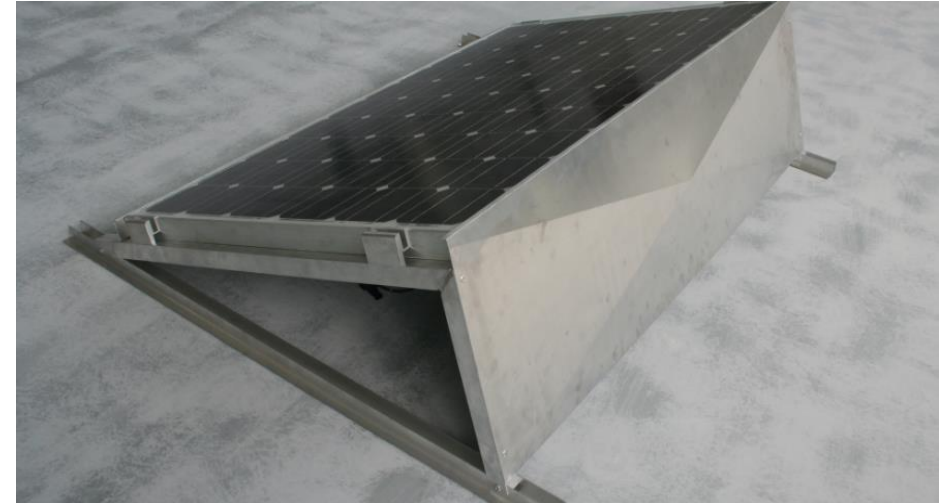




Rooftop System

FDS 100-K Cristallin Modules

- Laid out for large installations
- System without roof penetration und minimum ballasts
- Extremely short installation time because of pre assembled material
- Respectable and compact system construction
- Completely resistant to corrosion because of aluminium devices
- Suitable for all roofs with PVC-foil, bitumen or green roofing
- Aerodynamically explained assembly system
- Low system weight particularly suitable for roofs with low bearing load
- Suitable for all framed solar modules
- Optimal inclination angle 20 – 30°



Reference: FDS 200-S55, IKEA Berlin



Reference: FDS 200-S55, IKEA Milano

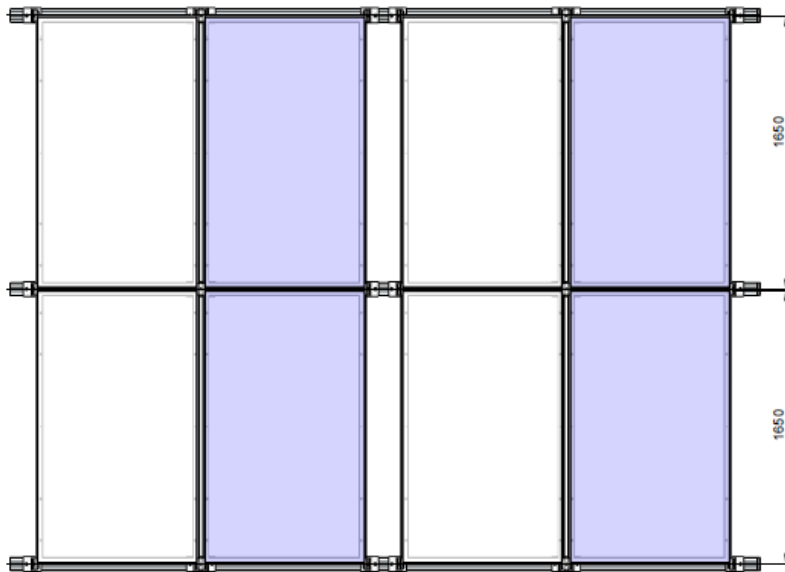
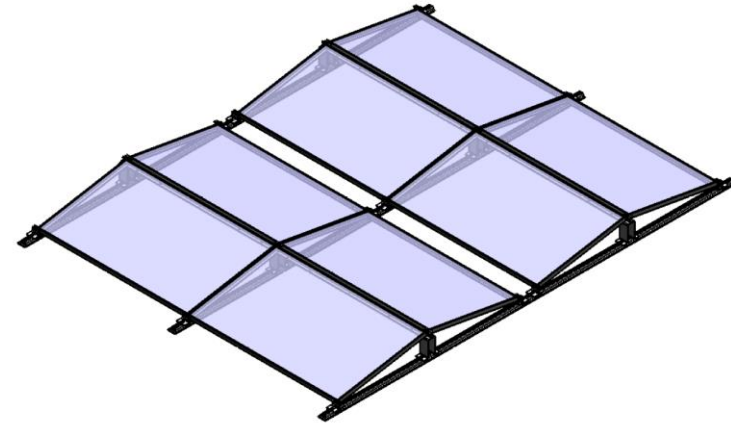
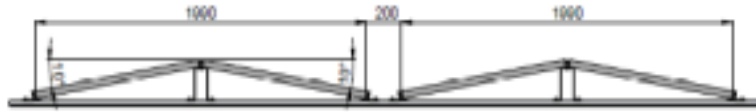


Reference: Bremen 500 kWp



Rooftop System East West

FDS 201-OW Cristallin Modules





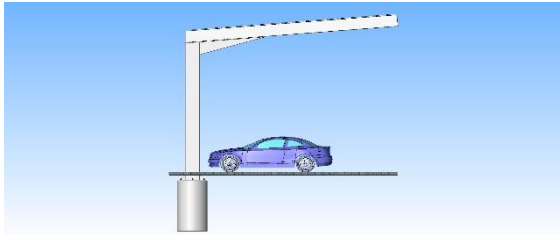
Solar Carport

Your benefits

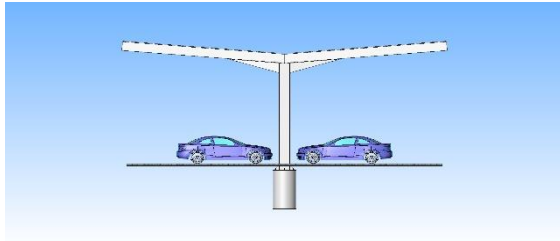
- Comfortable parking and free door opening
- Short assembly times and simple assembly
- Modular Systems
- Maximum use of the parking area
- Site-specific statics
- Durable and high quality materials
- Suitable for almost all types of modules
- Modern and elegant design
- Individual customer designs
- Financing by solar electricity



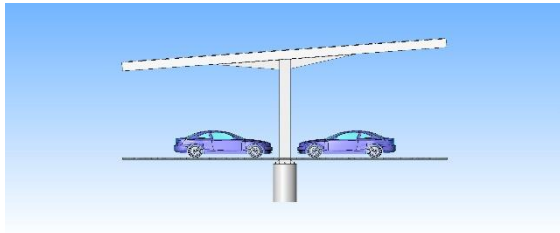
Carport



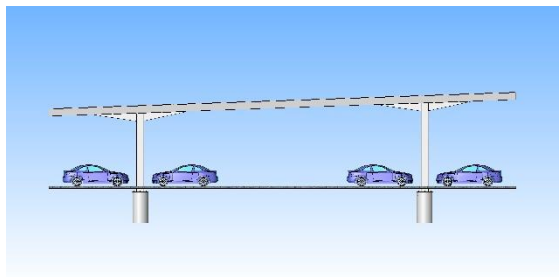
- SCS 100 - Single-row carport layout, standard and long version, Pitch roof design



- SCS 200 - Double-row carport layout, east - west orientation, Y - design frame construction

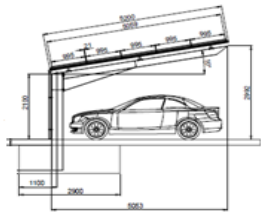

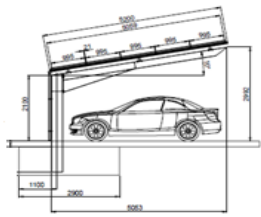

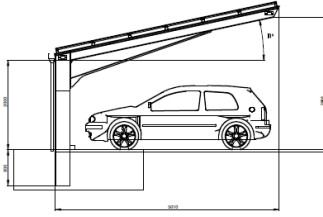
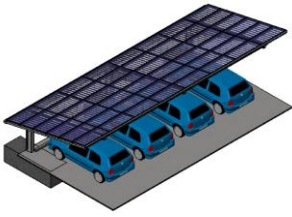
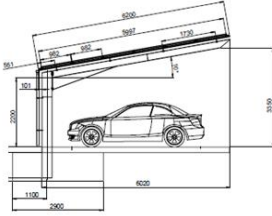
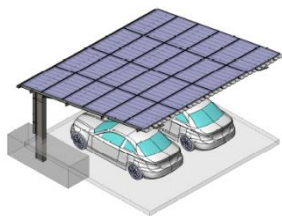


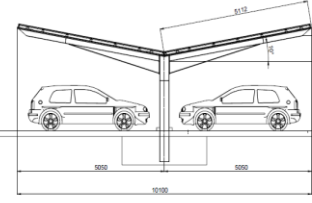
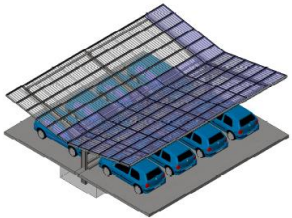
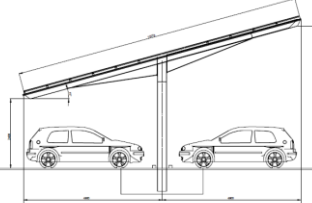

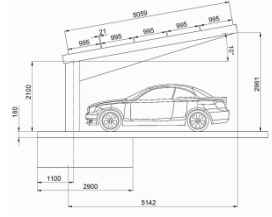
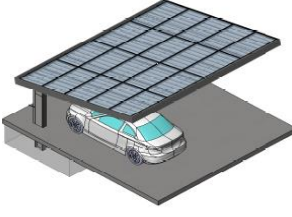
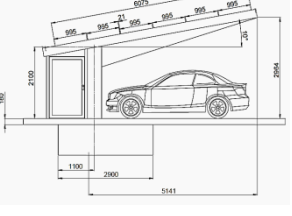
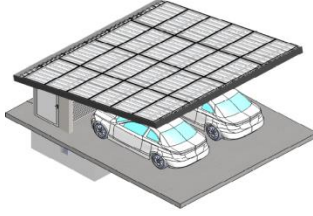
- SCS 300 - Double-row carport layout, south orientation, Pitch roof design



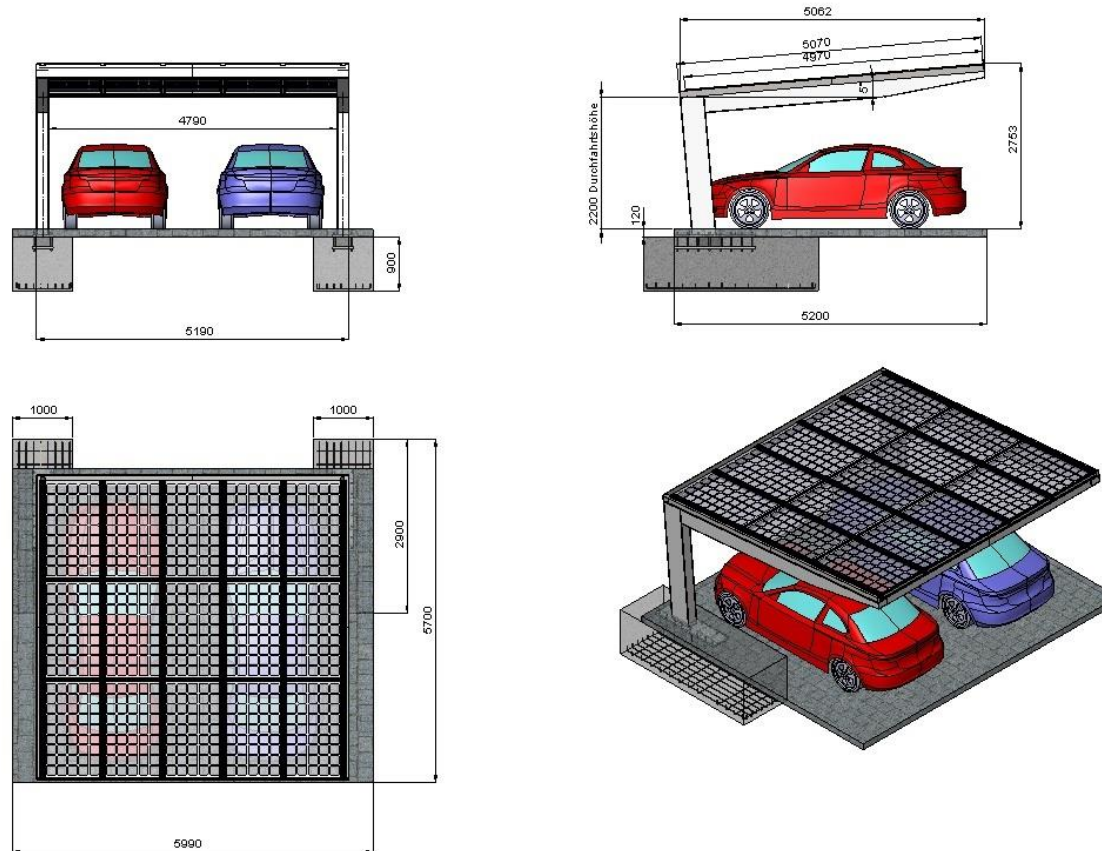
- SCS 400 - Long Span System

Types

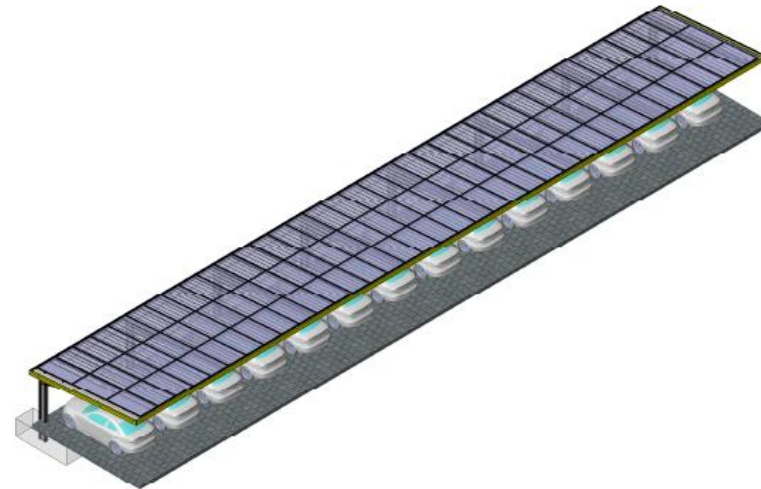
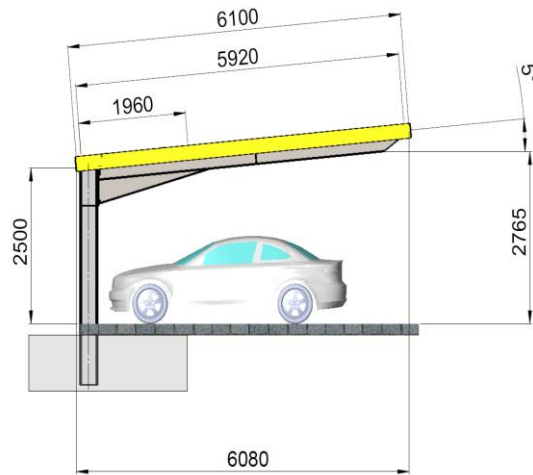
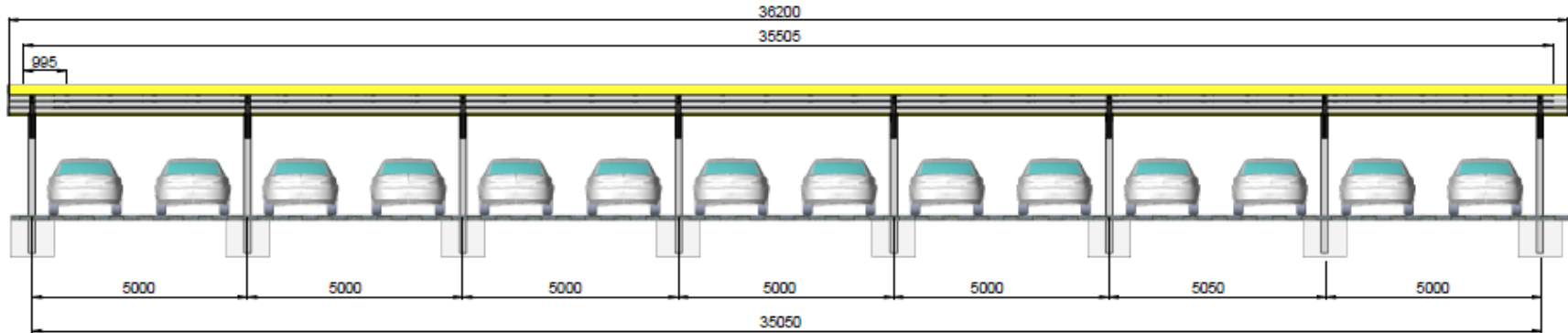
Type	Drawing	Graphic
SCS 100 S1 Standard l = 5000 mm		
SCS 100 S2 Standard l = 5000 mm		
SCS 100 S4 Standard l = 5000 mm		
SCS 100 L2 l = 6000 mm		

Type	Drawing	Graphic
SCS 200 S8 east-west-orientation		
SCS 300 S8 South orientation		
SCP 100 S2 Premium Design		
SCA 100 S2 Premium		

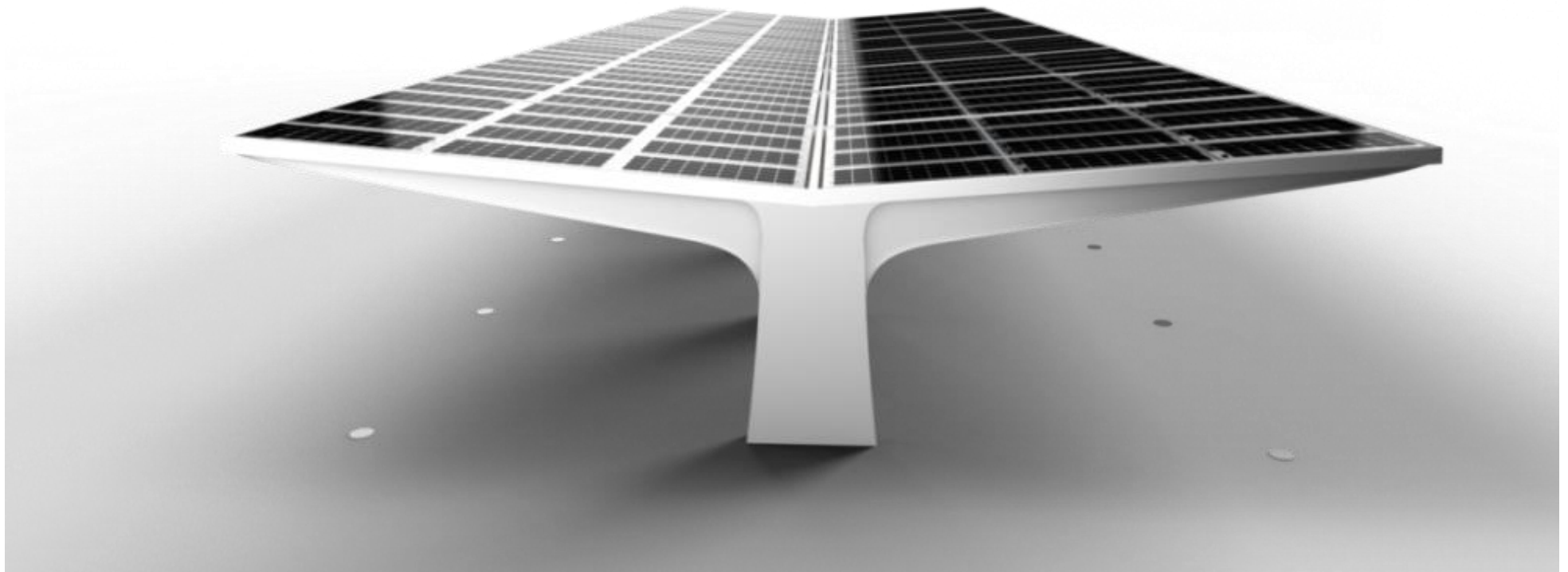
Solar Carport SCS 100 - 1 Row - 2 Parking spaces



Solar Carport SCS 100 - 1 Row - 10 Parking spaces

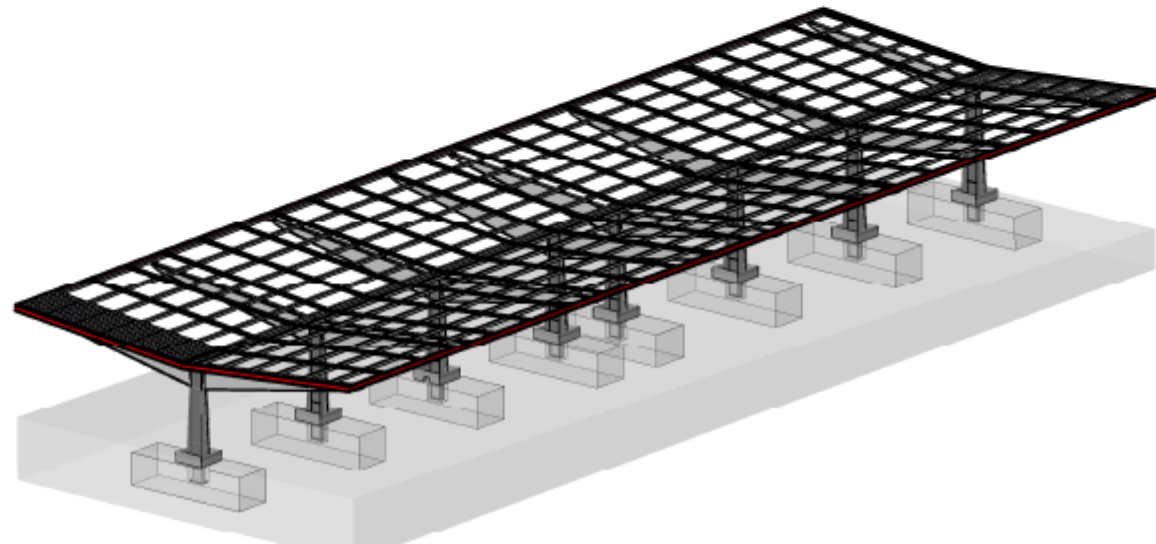
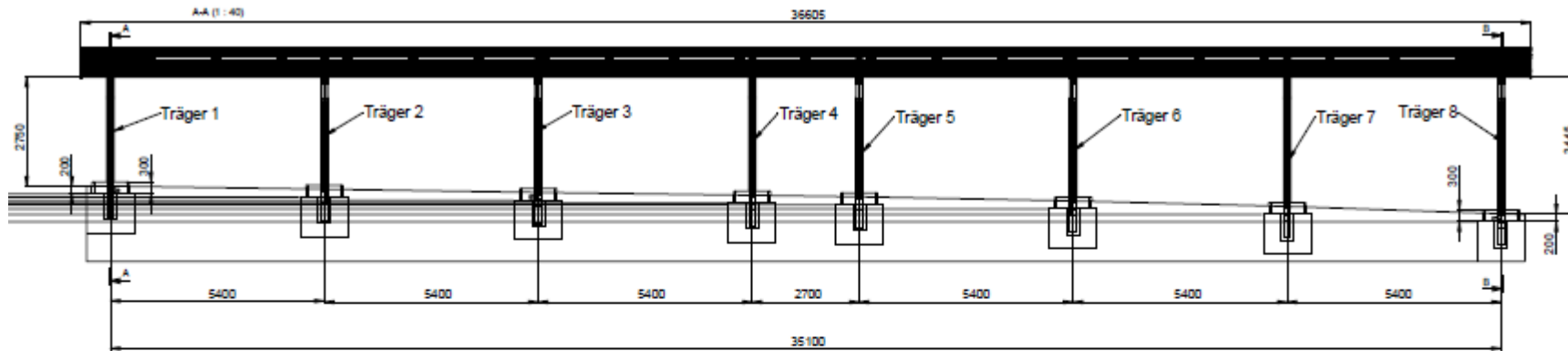


Solar Carport Premium SCP 200, Y - Design



Solar Carport Premium SCP 200

With Glas - Glas Modules, 26 Parking spaces



Referenz: Solarcarport SCS 200 L



Cooperation is the future

Arausol supported the organization in system development and design of the island solar system, optimally adapted to the needs of the indigenous families and the special climatic conditions in the Amazon.

We also developed and produced the assembly system for all solar systems. It is our responsibility to use it in the interest of the public, to make our resources and our know-how available to us and to work for projects that promote social cohesion and a functioning society regional or global.



As a leading company in field of solar technology we see ourselves in the special social responsibility to share our expertise and our success. We want to actively shape a world in the sense of our corporate culture. We also take a look outside the box.

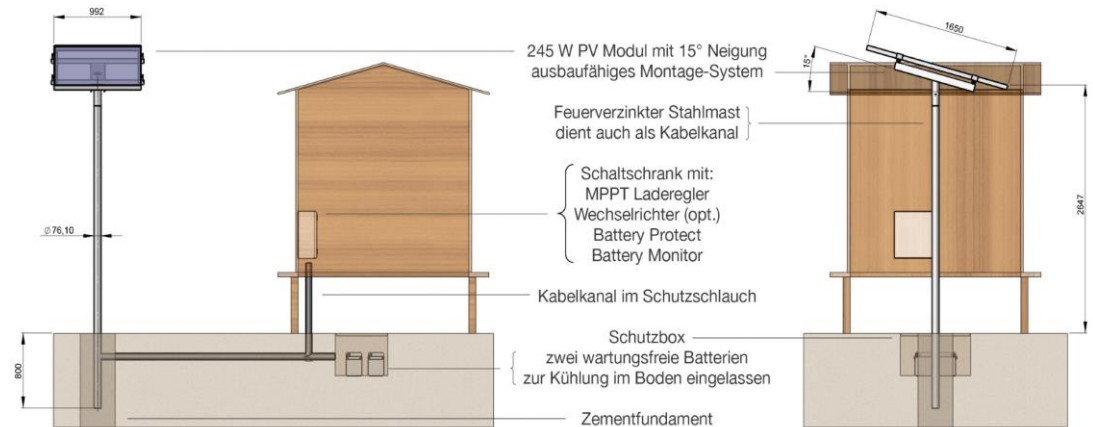
We support the non-profit organization LOVE FOR LIFE in the humanitarian solar energy project IMAGINE LIGHT in the Amazon region of Ecuador with the development and construction of the assembly systems for solar systems.

As well as with the provision of our technical know-how.



Application example IMAGINE LIGHT

The IMAGINE LIGHT solar project in the Amazon region of Ecuador allows four indigenous peoples affected by the destruction of their territories by the oil industry, access to clean and independent solar energy and thus sustainable and self-determined development. The strengthening of the indigenous peoples also helps to protect the Amazon rainforest, an important stabilizer of our world climate.



Contact



Arau Technik GmbH
Hanfwiesenstr. 15
D - 73614 Schorndorf
Tel: +49 7181 9220-0
Fax: +49 7181 9220-200
Mail: info@arausol.de
Web: www.arausol.de

